

Staging Areas

At both parks (Commissioners Park and Main Park) we have created staging areas for teams to stage and warm-up prior to the start of your games. We ask that you **do not** enter the dugouts until they have been cleaned out and sanitized.

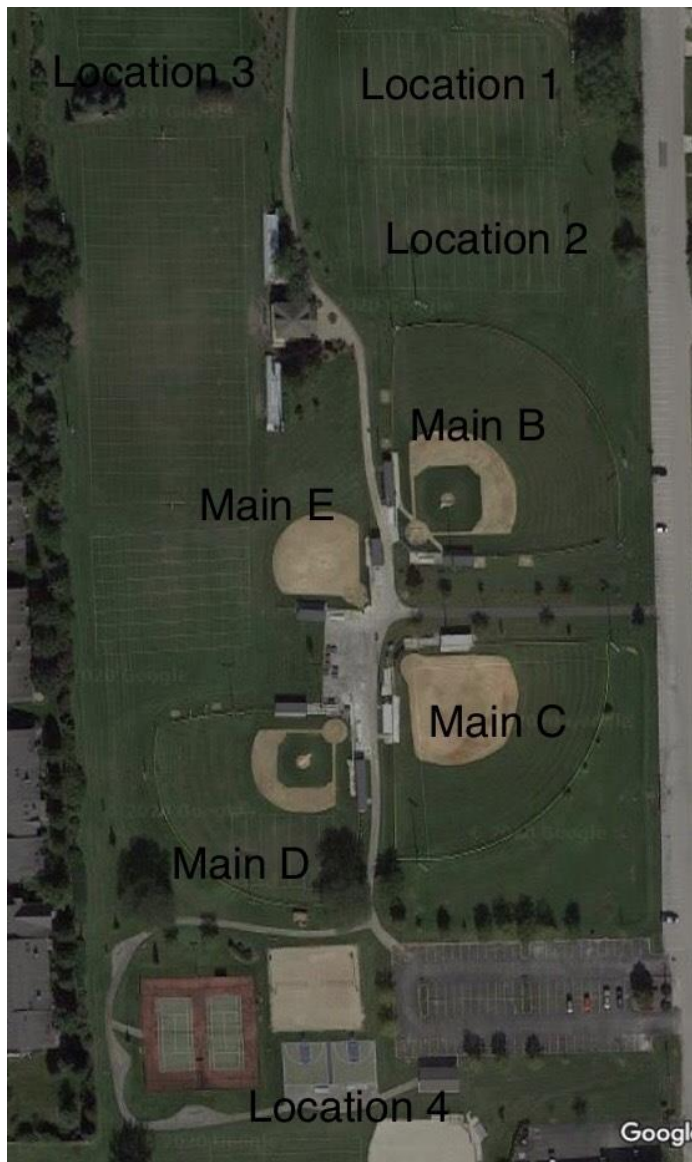
Main Park –

Location #1 – Main B Games

Location #2 – Main C Games

Location #3 – Main E Games (North of the football fields)

Location #4 – Main D Games (use the gravel baseball field area next to the railroad tracks)



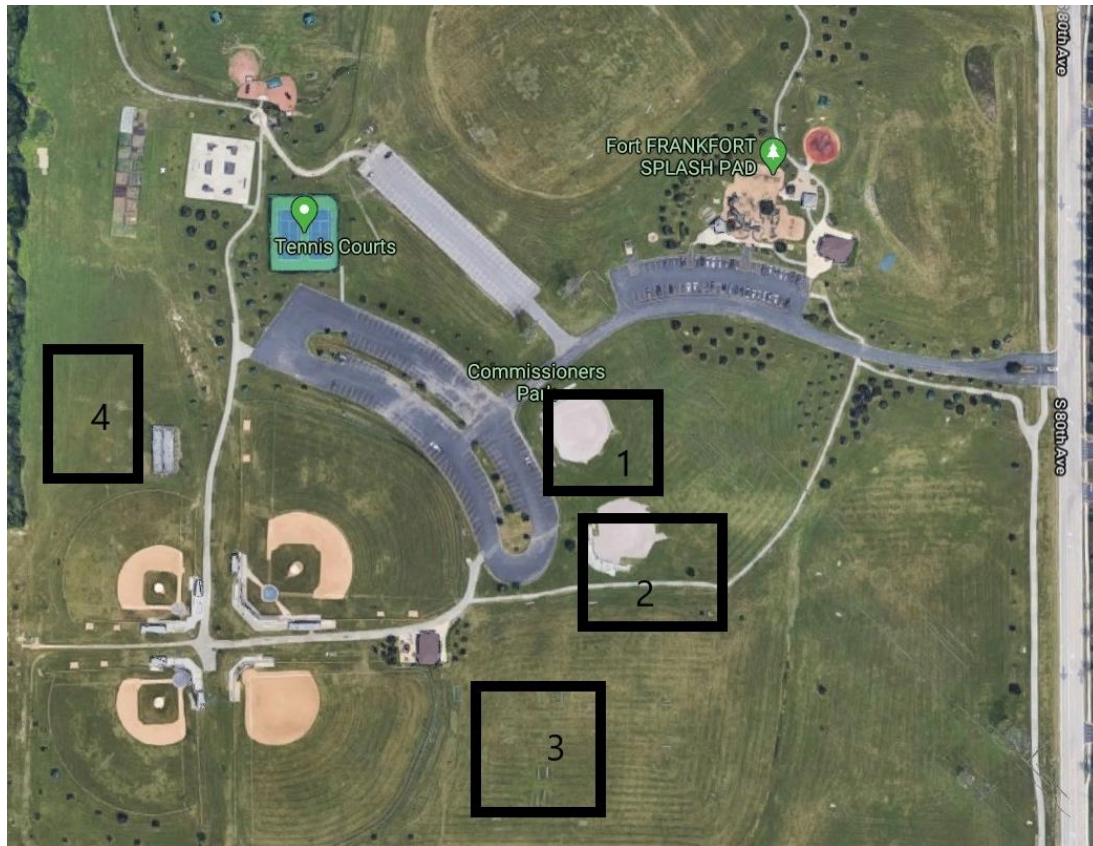
Commissioners Park –

Location #1 – C1 Games

Location #2 – C2 Games

Location #3 – C3 Games

Location #4 – C4 Games



Team-Check In

At team check-in please provide a copy of your roster and insurance stapled to your COVID waiver. After you turn this in you will be given your games balls.

Game Balls

We are providing you (4) game balls at check-in. These (4) baseballs will be kept with your team the entire tournament. Your team is to use your game balls when pitching.

General Seating

For purposes of general seating we ask that you remain socially distant and sit along the right and left fence lines as well as in the outfield.