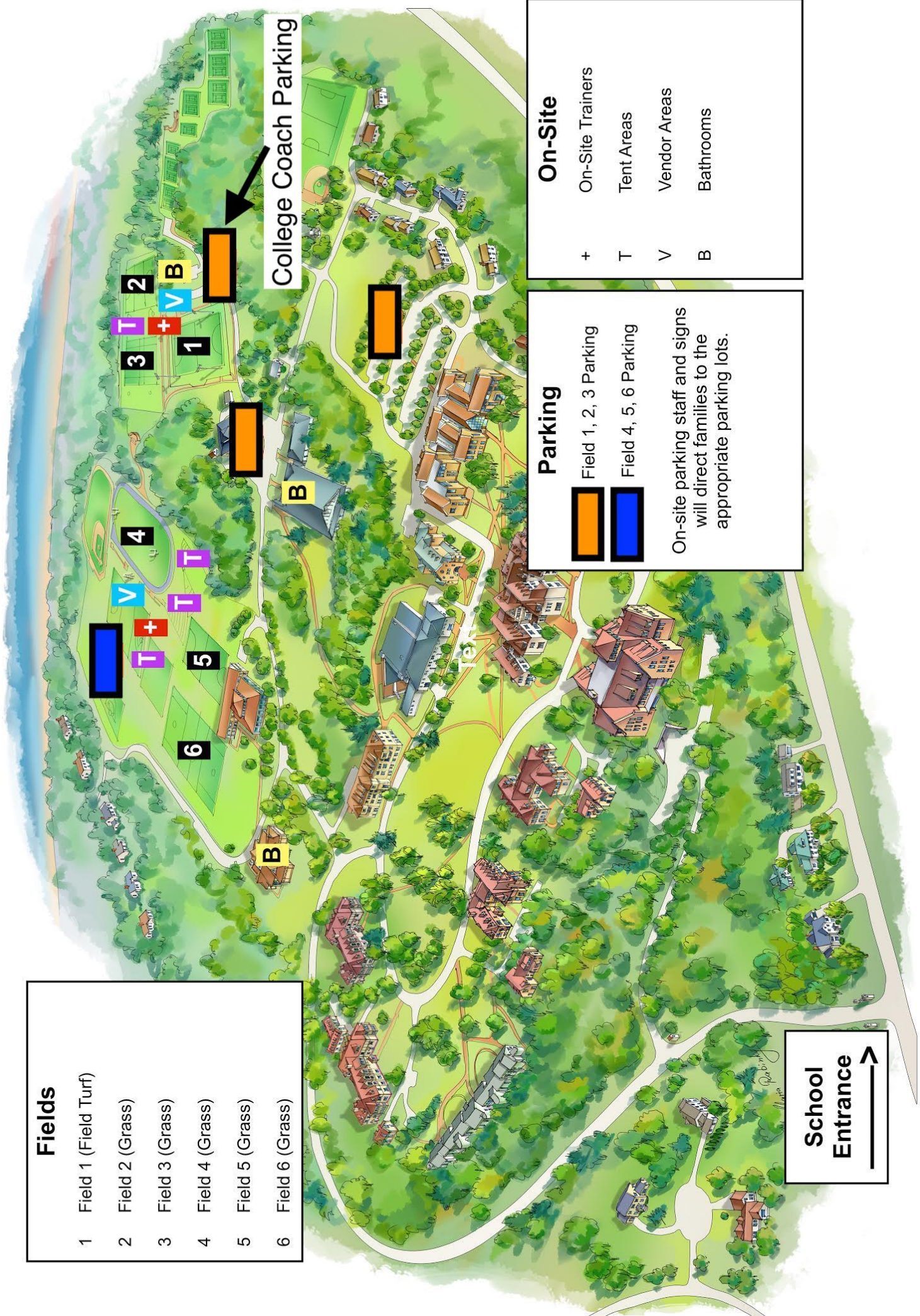


### Fields

- 1 Field 1 (Field Turf)
- 2 Field 2 (Grass)
- 3 Field 3 (Grass)
- 4 Field 4 (Grass)
- 5 Field 5 (Grass)
- 6 Field 6 (Grass)



### Parking

- Field 1, 2, 3 Parking
- Field 4, 5, 6 Parking

On-site parking staff and signs will direct families to the appropriate parking lots.

### On-Site

- + On-Site Trainers
- T Tent Areas
- V Vendor Areas
- B Bathrooms

**School Entrance**

**College Coach Parking**